

- **Owner:**
MPLX
- **Services:**
Transportation Impact Study
- **Year Completed:**
2019

Smithburg Processing Plant TIS

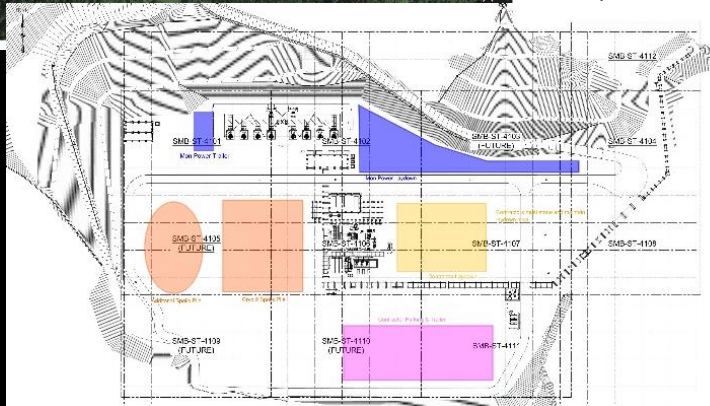
MPLX, Smithburg, Doddridge County, WV



Stahl Sheaffer Engineering was retained by MPLX as a traffic engineering consultant for a proposed Smithburg Processing Plant development located along Snowbird Road in Smithburg, West Virginia. Our traffic engineering team conducted a transportation impact study to identify the potential traffic impacts within the transportation study area resulting from the current construction operations and from the final proposed processing plant operations.



The project necessitated coordination with representatives from the West Virginia Division of Highways (WVDOH) Department of Transportation Central Office and District 4-0 Office to outline the scope of the transportation impact study. Based on the approved scope, Stahl Sheaffer completed traffic data collection, an evaluation of potential truck travel routes, development of existing traffic volume to determine preconstruction traffic conditions and development of opening year traffic volumes, forecasting and distribution of anticipated site-generated traffic for final processing plant operations based on MPLX projections, and the traffic analyses of the transportation study area. Traffic analyses included



intersection capacity and queue analysis utilizing Synchro and Sim Traffic Software, an evaluation of traffic signal warrants, an evaluation of turn lane warrants, storage lane length analysis, an evaluation of sight distance, and completion of a traffic signal alternative analysis at the Route 50 and Snowbird Road intersection. All analyses conformed to the WVDOH Traffic Engineering Directives. The analyses and results

were summarized in a report including summary tables, figures, and technical appendix, and were provided to MPLX for submission to WVDOH Department of Transportation Central Office and District 4 Office for review and approval.