

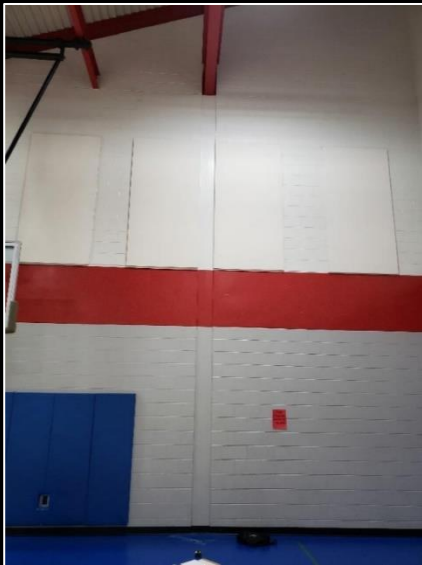
- **Owner:**  
Selinsgrove Area School District
- **Services:**  
Visual Assessment
- **Completed:**  
2019

# Intermediate School Settlement Investigation

Selinsgrove Area School District, Snyder County, PA



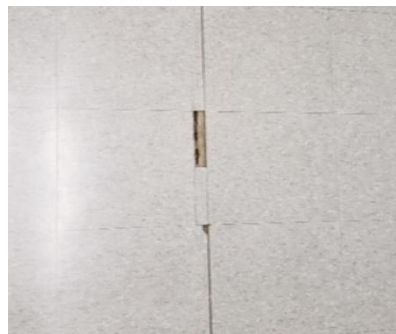
Stahl Sheaffer performed a field observation to review reports of cracking and settlements at various locations. Stahl Sheaffer performed a non-destructive visual assessment throughout the school to evaluate cracks in the masonry walls and concrete floor slab coverings, determine a likely cause, and correlated recommendations for next steps. A report of findings with recommendations for repairs and additional monitoring were provided.



*Floor finish damage resulting from differential slab settlement at column isolation joint as observed in the gymnasium*



*Masonry cracking & settlement of the slab-on-grade near the cafeteria*



*Cracking in vinyl flooring tiles in intermediate school corridor*



*Typical vertical & horizontal cracking concrete masonry walls.*