

STAHLSHEAFFER ENGINEERING

survey & reality capture

Services:

- Boundary & Topographic Surveys
- 360° Survey-Grade Mobile LiDAR
- 360° 3D Terrestrial Scanning
- Utility Mapping & Coordination
- UAS/Drone Aerial Inspection
- ALTA/NSPS Surveys
- Flood Elevation Surveys
- Right of Way Documentation
- Construction stakeout
- Custom GIS Applications

Stahl Sheaffer provides mobile LiDAR scanning, aerial inspection, and field survey capabilities, ensuring we can provide the most appropriate method for your project, balancing speed, safety, and cost. We perform feature extraction on mobile LiDAR and survey data to create topographic and planimetric base mapping in either AutoCAD or MicroStation format, allowing engineers to make well-informed design decisions to tailor modification and construction plans to fit the situation at hand.

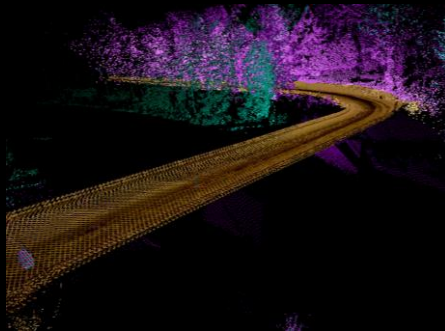


stahlsheaffer.com

STAHL SHEAFFER ENGINEERING



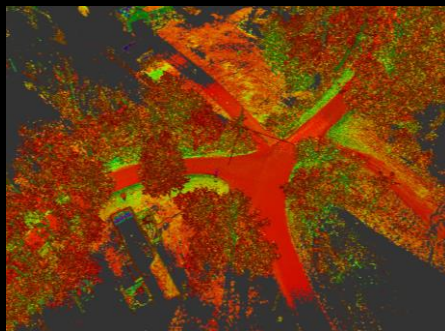
Site Survey



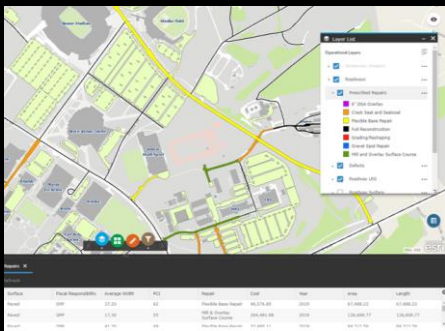
Base Mapping



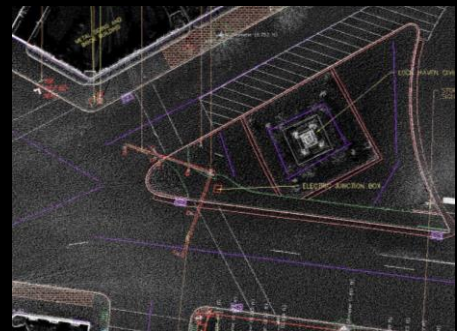
Aerial Inspection



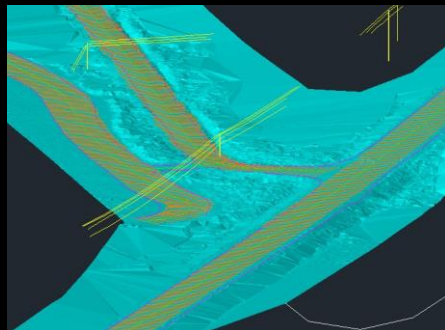
Roadway Defect Detection



Custom GIS Applications



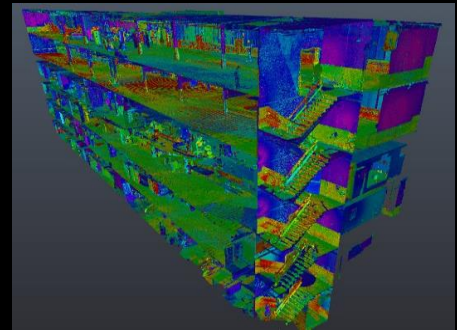
Planimetrics



Intersection Topography



Utility Clearance



360° Building Scanning

info@stahlsheaffer.com