

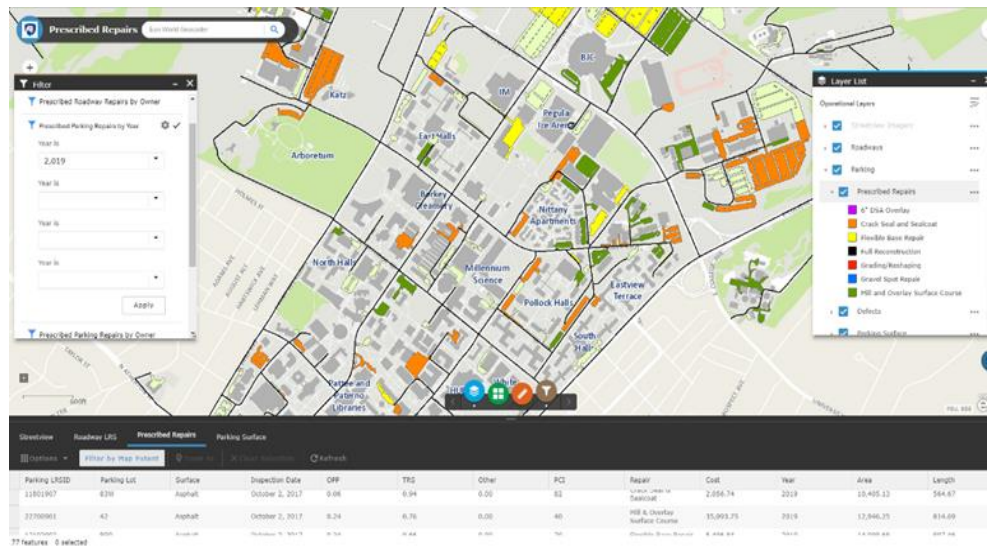
# GIS Services

Stahl Sheaffer Engineering employs GIS professionals that ensure we have a broad spectrum of skills and expertise in-house, and we maintain state-of-the-art equipment including terrestrial and mobile LiDAR scanners, UASs, video-equipped vehicles, and mobile data collection platforms. The staff has extensive experience designing, building, and implementing Enterprise-Grade GIS systems from the ground up. The GIS team is composed of personnel with extensive experience in Enterprise GIS systems architecture, GIS systems engineering, database design, software engineering, GIS-specific IT services, and a variety of subject matter experts.

Stahl Sheaffer has extensive experience with the use and administration of the entire ArcGIS suite of tools, services and extensions. Services include, but are not limited to:

- ArcGIS Desktop Applications
- Enterprise Applications
- Mobile Applications
- Database Design and Administration
- Workflow Automation
- Application Development
- Field Services and Data Collection

From basic map creation to enterprise systems implementation, application development, LiDAR scanning, data collection or anything in-between, our GIS professionals and supporting staff are equipped for the challenge.



Stahl Sheaffer has been approved for the Esri Partner Network. This will help us to better understand and implement emerging technologies as well as to help Esri mold software upgrades with our real-world project experiences. This partnership will better position Stahl Sheaffer to serve our clients with the most effective and cost-efficient solutions available.

