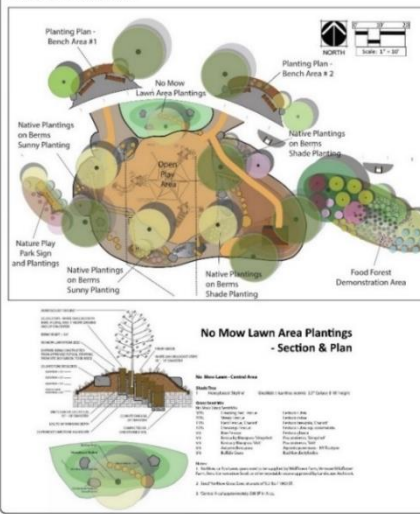


STAHL SHEAFFER ENGINEERING

- **Owner:**
The City of Williamsport
- **Services:**
 - Project Management
 - Site Engineering Design
- **Total Project Budget:**
\$500,000



City of Williamsport - Brandon Park
Nature Play Playground
Landscape Planting Plan I



stahlsheaffer.com

Brandon Park Rehabilitation



The City of Williamsport, Lycoming County, PA

Stahl Sheaffer provided project management, subconsultant coordination, and design services as the lead consultant for the Brandon Park Rehabilitation, located in the City of Williamsport, Lycoming County. The park rehabilitation project included improvements and additions throughout the park, to include a nature playground, walking trails, parking lot overlay and expansion, park site lighting, stormwater bioretention areas, and tennis court resurfacing. This project was also one of PA DCNR's pilot Nature Play projects in the state, exploring the potential of this type of recreational experience to connect children with their natural environment. The nature play area incorporated natural play materials such as log structures and stone and gravel play areas, a homestead play house, an edible garden and native plantings, and interpretive signage. There are also opportunities for future build-out in the center of the play space for a natural play structure.

Stahl Sheaffer led the overall design effort and managed the project team, including a landscape architecture consultant to design the Nature Play area. The project began in the conceptual stages and included coordination with City staff and officials before moving to final design. Following conceptual design, the project moved to final design and coordination with PA DCNR to facilitate the grant funding process. Stahl Sheaffer also managed the permitting requirements for the project, which included a Stormwater NPDES permit and PA Labor & Industry permit.



Read more here: <https://www.sungazette.com/news/top-news/2019/12/nature-play-starts-to-take-shape/>