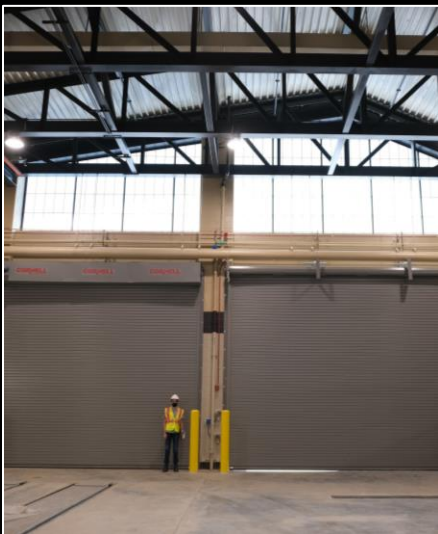


- **Owner:**
The Pennsylvania Turnpike Commission
- **Services:**
 - Structural Engineering
 - Site Engineering
 - Stormwater Management Design
- **Construction Cost:**
\$17,000,000
- **Year Completed:**
Design: 2019
Construction: 2021 (anticipated)

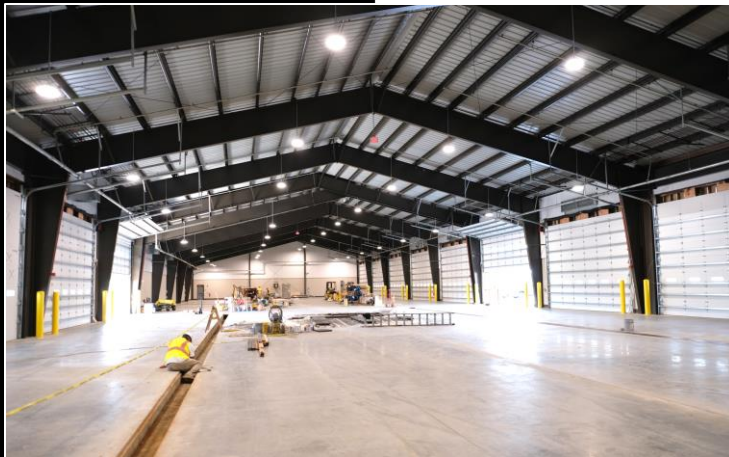


New Maintenance Facility Design



The Pennsylvania Turnpike Commission, South Fayette, PA

The Pennsylvania Turnpike Commission's new maintenance facility project included the design of all buildings and infrastructure necessary to construct a fully-functional, highly-efficient, and sustainable highway maintenance and vehicle maintenance facility. Stahl Sheaffer provided structural building engineering services for an office and maintenance building housing offices, maintenance bays and a truck wash bay, a warehouse/storage building, a pump house and generator building, and support facilities including material storage and a free-standing cantilevered steel framed fueling island roof. The primary maintenance facility building included the design of 57-foot long custom engineered and detailed double pitched roof trusses supporting an overhead crane over the maintenance bays. The main building also housed a hazardous material containment pit, accommodations for vehicular maintenance lifts and wash equipment, and an elevated mechanical mezzanine. Walls and roof framing were designed to accommodate large translucent wall panels in the maintenance bays to provide additional natural lighting.



As part of a team, Stahl Sheaffer also managed the design effort for the site engineering, including the County and Township land development submissions. The project involved site layout, grading, stormwater management, landscaping, and utility service design for the nine-acre maintenance facility. Work also included coordinating with the Pennsylvania Turnpike Commission to complete facility layout, grading, drainage design, utility connections, erosion control, and contract administration.