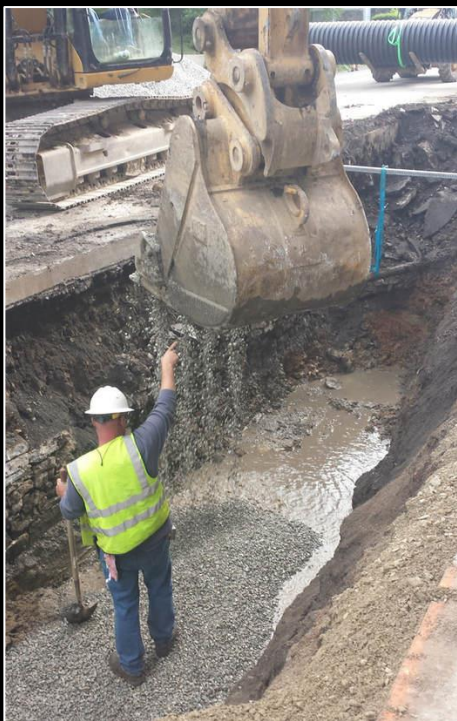


- **Owner:**
Borough of Bellefonte
- **Services:**
 - Engineering Design
 - Highway Occupancy Permitting
 - Utility Coordination
 - Drainage Analysis
 - Construction Administration
 - Construction Inspection
- **Construction Cost:**
\$373,000
- **Year Completed:**
Professional Services: 2015



Lamb Street Drainage Improvement Project

Borough of Bellefonte, Bellefonte, PA

This project included the replacement of a stacked-stone stormsewer culvert that was damaged by flooding events. The culvert was collapsed, had blind connections, and was not accessible for maintenance. Nearly 600' of the culvert was replaced with modern stormsewer pipe, inlets and manholes. The project objectives were to use the PEMA funds in an effective manner to update and improve the efficiency of the system and reduce future maintenance cost. This resulted in the reconstruction of the pavement, curb, sidewalk, other utilities, and ADA facilities. An HOP, including a drainage analysis, was required because the system connects to a state-owned pipe culvert before outletting into Spring Creek. Stahl Sheaffer provided professional services including design, utility coordination, permitting, PS&E package, bid/advertisements, bid alternates, and construction inspection and oversight. Funds were administered by PEMA, requiring all work to be in accordance with the Pennsylvania Prevailing Wage Act, and a confined project schedule.

